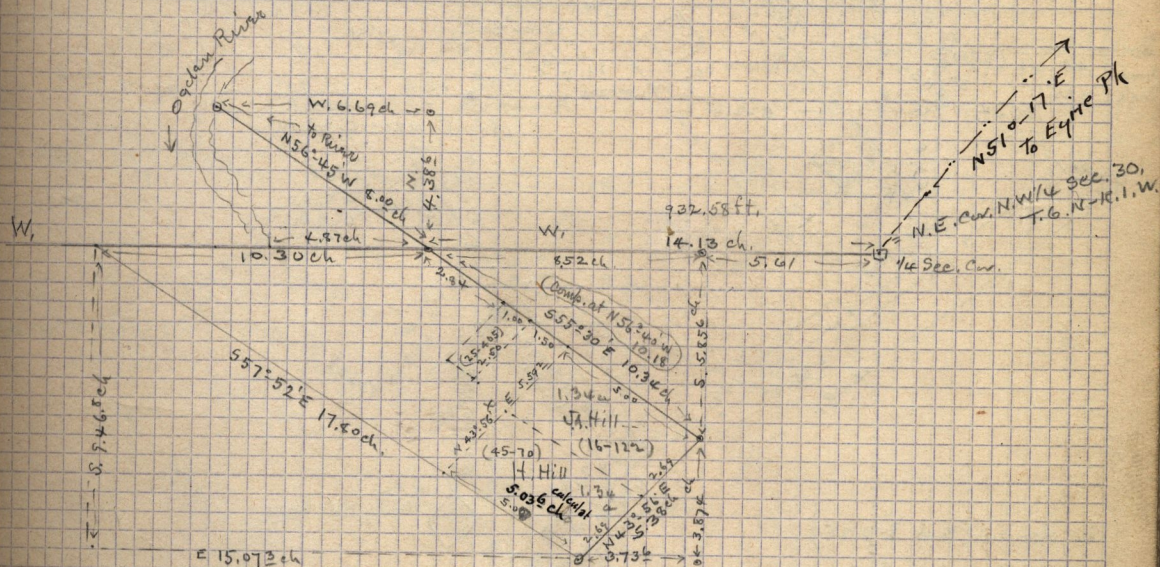


April 10-1905 - Survey for John Hill, in S.W. 1/4 Sec. 19, & N.W. 1/4 Sec. 30, T. 6 N.P. 1. W. - S. L. M. (23) Adm.  
 Descriptions,

- Original Tract {
- 1st - R. of Deeds - P. 64-65 - Wm Elmer to Sarah Ann Hill - 74.8 W. 1/4 Sec. 19, T. 6 N.P. 1. W., Beg, 14.13 ch. W. of S. E. Cor. of 1/4 Sec. N. 43° 56' W. 8.00 ch to Ogden River, down said River to point 4.87 ch W. of Crq, E. 4.87 ch to Crq, 1.5 ac.
  - 2nd - R. of Deeds - 63-64 - Thos Reed to Sarah Ann Hill - 77. N.W. 1/4 Sec. 30, T. 6 N.P. 1. W., Crq. 14.13 ch W. of N. E. Cor. of 1/4 - W. 10.30 ch - S. 57° 52' E 17.80 ch. N 43° 56' E 5.38 ch N 55° 30' W. 10.34 ch to Crq, 7.54 ac.

- Part of Original Tract {
- 1st 45-405 - Sarah A. Hill to Henry A. Hill, pt. N.W. 1/4 Sec. 30, T. 6 N.P. 1. W., Crq. 14.13 ch. W. and S. 43° 56' W. - 2.69 ch From N. E. Cor. of said 1/4 Sec. - S. 43° 56' W. 2.69 ch. N 57° 52' W. 5.00 ch. N 43° 56' E 2.69 ch, S 55° 30' E 5.00 ch to Crq.
  - 2nd 16-122 - Sarah Ann Hill to John Alvin Hill - 77. N.W. 1/4 Sec. 30 - T. 6 N.P. 1. W., Crq. 14.13 ch W and S. 55° 30' E 5.34 ch, from N. E. Cor. of 1/4 Sec. - Thence S. 55° 30' E 5.00 ch, S. 43° 56' W. 2.69 ch. - N 55° 30' W. 5.00 ch, N 43° 56' E 2.69 ch to Crq.
  - 3rd 25-405 - Sarah Ann Hill to Alice Rebecca Hill Reeve - 77. N.W. 1/4 Sec. 30, T. 6 N.P. 1. W., Crq. 14.13 ch W and S. 55° 30' E 2.84 ch, from N. E. Cor. of 1/4 Sec. - Thence S. 55° 30' E 4.00 rods, S. 43° 56' W 10 rods, - N 55° 30' W, 4 rods - N 43° 56' E 10 rods to Crq.



Traverse table to find the dist across S. W. End of J. Hill and the Hill on diagram

S 55° 30' E	5.00 ch.	N	2.83	E	4.11	W	
S 43° 56' W	5.38	S	3.87			3.72	6
N 57° 52' W	5.03		2.678			4.26	4
N 43° 56' E	5.092		4.026		3.88	8.00	7
			6.704	6.704	8.00	8.00	

Traverse Table of Sarah Hill Tract. from N.E. N.W. 1/4 Sec 30

beg. 932.58 ft. W. 7 158.2 ft S. 55° 30' E

S 55° 30' E	122.0	N	69.1	E	100.5	W	
S 33° 26' W	182.1		151.9			100.4	6
N 47° 14' W	119.6		81.7			27.5	5
N 32° 06' E	165.0		139.8		87.7	199.7	4